

Diversification Update at 31/12/2011

<p>TOBAM's Diversification Ratio (DR)¹ measures to what extent a portfolio is diversified. The DR² (square of the diversification ratio) corresponds to the number of independent degrees of freedom in a particular portfolio – or the number of independent variables at work. As the table shows, the “broad market” indices leave diversification on the table. In addition to a snapshot of each market's DR², the table shows the DR² of a well-diversified portfolio, and the fraction of available diversification used by the index.</p>		<i>DR² - Index diversification</i>	<i>DR² - Maximum diversification</i>	<i>% diversification used by index</i>
	MSCI EMU	1.66	3.53	47%
	MSCI US	1.74	3.61	48%
	MSCI UK	1.80	2.82	64%
	MSCI Japan	2.04	4.75	43%
	MSCI World	2.56	5.81	44%
	MSCI Australia	1.66	2.76	60%
	MSCI Emerging²	2.96	4.12	72%

Focus on the Anti-Benchmark US Equity in 2011

Ending a volatile, unpredictable year for global equity markets in general, the US equity market managed to deliver flat to mildly positive returns for the 4th quarter and year. Despite encouraging news on the domestic front – US companies churned out positive corporate profits, creating compelling buy opportunities, and macroeconomic indicators ticked up – these positives were overshadowed by the opacity of the drawn-out sovereign debt crisis in Europe, which weighed on business and consumer confidence worldwide. In short, systemic risk dominated markets, driving average correlations and market volatility higher in the US. During the second half of the year, average correlations rose by over 60%³, and volatility rose significantly.

Against this backdrop, the US equity market, as measured by the MSCI USA index, returned 1.36% for the full year, with market volatility of about 24%. Over the period, the AB US Equity portfolio surpassed the benchmark by about 1%, returning 2.32% for the year gross of fees, with 19% volatility:

2011 Performance and volatility

	<i>Performance</i>	<i>Volatility</i>	<i>Sharpe Ratio</i>
	YTD	YTD	YTD
	31 Dec 2011	31 Dec 2011	31 Dec 2011
US Anti-Benchmark Equities	2.32%	19.27%	0.11
MSCI US Net TRI	1.36%	23.61%	0.05
<i>Difference</i>	<i>+0.96%</i>	<i>-18%</i>	
S&P 500 TRI	2.11%	23.55%	0.08

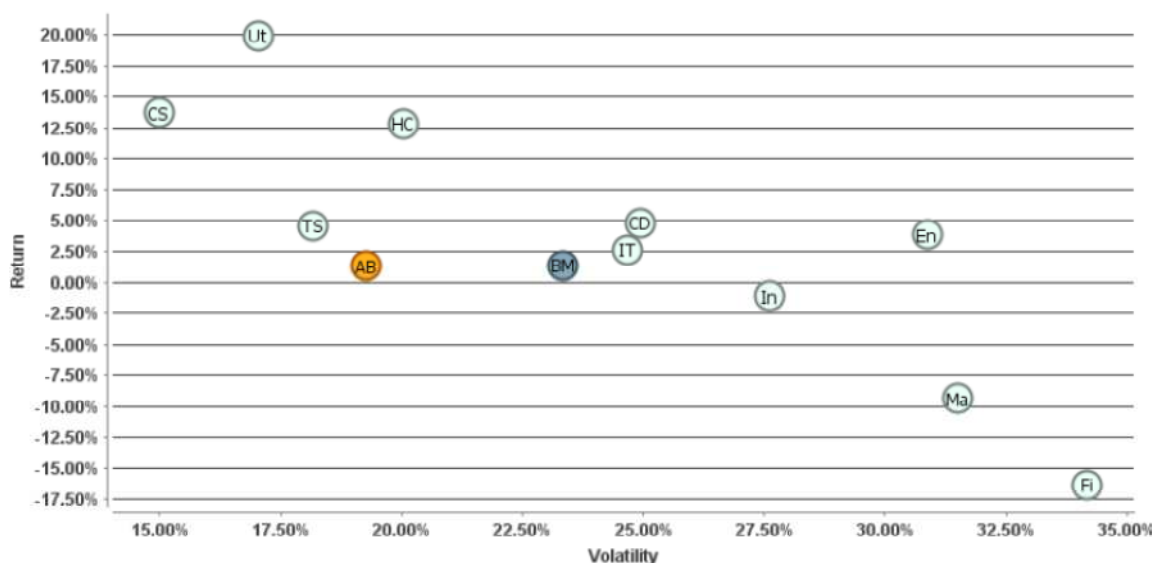
¹TOBAM's Diversification Ratio measures a portfolio's or index's diversification. It is supported by original research and is based on a mathematical definition of diversification. TOBAM's "Anti-Benchmark" Most Diversified Portfolio[®] maximizes this Diversification Ratio. Maximizing diversification within a universe of securities provides a result closer to the true market risk premium from that universe. "Maximum Diversification[®]" and "MaxDiv[®]" are registered trademarks of TOBAM.

²The Anti-Benchmark Emerging Markets Equity strategy filters the reference index to the 200 largest market capitalizations.

³Between 29/07/11 and 31/12/11, average correlations between stocks in the S&P 500 index rose 61.1%. Source: Bloomberg, TOBAM.

2011 Risk & Return by sector

The most volatile sectors also performed the worst:

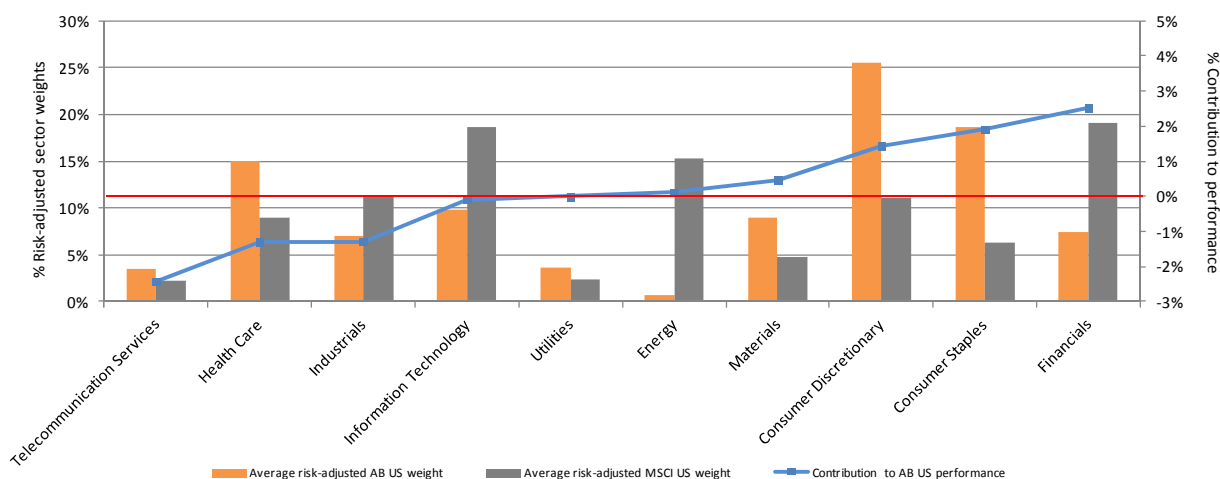


Ex-post percentage Returns and Annualized Volatilities for the year ended 31 Dec 2011. The US Anti-Benchmark Strategy (AB) and MSCI USA Index (BM) are represented, along with the following GICS MSCI Sectors: Consumer Discretionary (CD), Consumer Staples (CS), Energy (EN), Financials (FN), Health Care (HC), Industrials (IN), Information Technology (IT), Materials (MT), Telecom Services (TS) and Utilities (UT). Volatilities estimated using daily data. Returns are in USD.

Despite the major distraction posed by high systemic risk linked to events overseas, the US market (as measured by the MSCI USA) still managed to deliver mildly positive returns in 2011. Moreover, in spite of higher average correlations, particularly at year end, the AB US strategy still found diversification opportunities, and spread risk allocation across both diversified and diversifying sectors. In particular, the AB made higher allocations to the Consumer Discretionary, Consumer Staples and Health Care sectors due to their higher level of diversification, both within and among sectors. This led to modest outperformance (+0.96% vs. the index for the year) and 20% less volatility than the benchmark.

2011 US Sector Weights and Return Contributors (full year)

Risk-adjusted sector weights (bars, LH axis) vs. % performance contribution (line, RH axis)



Conclusion

Although 2011 was dominated by market volatility, with systemic risk taking on a disproportionate importance in equity market performance, the AB US portfolio nonetheless captured more of the equity risk premium. The flood of headlines from Europe, Asia and the Middle East all but drowned out positive fundamentals in the US stock market. Reading between the lines, this trend underscores the rising impact of systemic risk drivers as opposed to traditional style drivers (value vs. growth) in equity markets. As demonstrated in 2011, by continuously maximizing diversification, the AB US portfolio aims to continue to capture diversification across all risk factors in the market.

For more information

TOBAM is an asset management company offering innovative investment capabilities whose aim is to maximize diversification. TOBAM's flagship Anti-Benchmark® strategies, supported by original research and a mathematical definition of diversification, provide clients with diversified core equity exposure, both globally and in domestic markets. FTSE also publishes the FTSE TOBAM Maximum Diversification Index Series based on the Anti-Benchmark equity portfolio construction methodology. The company manages over \$2.0 billion via its Anti-Benchmark strategies for institutional clients worldwide. Its team includes sixteen financial professionals based in Paris, Los Angeles and Amsterdam (31.12.2011).

Contacts:

Head of Business Development

Christophe Roehri
+33 1 53 23 41 60
Christophe.Roehri@tobam.fr

TOBAM North America

Steve Sapra, Ph.D., CFA
+1 646 240 4660
Steve.Sapra@tobam.fr

Benelux

Morella Hessels
+31 203 012 106
Morella.Hessels@tobam.fr

United Kingdom

Laura Vu Thien
+33 1 53 23 41 65
Laura.VuThien@tobam.fr

Client Service

Elizabeth Breaden
Tel. +33 1 53 23 41 56
ClientService@tobam.fr

TOBAM Marketing Partners

Nordics - Paxstone Capital LLP

Kasper Kemp Hansen
Tel. +45 36 95 97 00
kasper.hansen@paxstone.com

Canada - Investeam

Nancy Nightingale
Tel. +1 416 860 9490
nancy.nightingale@investeam.ca

Australia & NZ - Phoenix Capital Advisory Ltd.

Mark Jackson mark.jackson@phoenixcap.com.au
Matthew Wormald matt.wormald@phoenixcap.com.au
Tel. +612 9947 9781

Disclaimers

This document is intended only for the person to whom it has been delivered. This document is confidential and may not be reproduced in any form without the express permission of TOBAM and to the extent that it is passed on, care must be taken to ensure that any reproduction is in a form which accurately reflects the information presented here. While TOBAM believes that the information is correct at the date of production, no warranty or representation is given to this effect and no responsibility can be accepted by TOBAM to the recipient of this document or end users for any action taken on the basis of the information contained herein. We do not represent that this information, including any third party information, is accurate or complete and it should not be relied upon as such. No reliance may be placed for any purpose on the information and opinions contained in this document or their accuracy or completeness.

Opinions expressed herein reflect the opinion of TOBAM and are subject to change without notice. This document is for information purposes and does not constitute advice or a recommendation to enter into any transaction or an offer or an agreement, or a solicitation of an offer or an agreement, to enter into any transaction, nor shall it or the fact of its distribution form the basis of, or be relied on in connection with, any contract for the same. Before entering into any transaction, you should consider the suitability of the transaction to your particular circumstances and independently review (with your professional advisers as necessary) the specific financial risks as well as the legal, regulatory, credit, tax and accounting consequences of entering into such transaction. The value and the income produced by a strategy may be adversely affected by exchange rates, interest rates, or other factors so that an investor may get back less than he or she invested. Past performance is not indicative of future results.

Copyrights: *All text, graphics, interfaces, logos and artwork, including but not limited to the design, structure, selection, coordination, expression, "look and feel" and arrangement contained in this presentation, are owned by TOBAM and are protected by copyright and various other intellectual property rights and unfair competition laws.*

Trademarks: *"TOBAM," "MaxDiv," "Maximum Diversification," "Diversification Ratio," "Most Diversified Portfolio," "Most Diversified Portfolios," "MDP" and "Anti-Benchmark" are registered trademarks. The absence of a product or service name from this list does not constitute a waiver of TOBAM trademark or other intellectual property rights concerning that name.*

Patents: *The Anti-Benchmark, MaxDiv and Maximum Diversification strategies, methods and systems for selecting and managing a portfolio of securities, processes and products are patented or patent pending.*

Knowledge, processes and strategies: *The Anti-Benchmark, MaxDiv and Maximum Diversification strategies, methods and systems for selecting and managing a portfolio of securities, processes and products are protected under unfair competition, passing-off and misappropriation laws.*

Terms of use: *TOBAM owns all rights to, title to and interest in TOBAM products and services, marketing and promotional materials, trademarks and Patents, including without limitation all associated Intellectual Property Rights. Any use of the intellectual property, knowledge, processes and strategies of TOBAM for any purpose and under any form (known and/or unknown) in direct or indirect relation with financial products including but not limited to certificates, indices, notes, bonds, OTC options, warrants, mutual funds, ETFs and insurance policies (i) is strictly prohibited without TOBAM's prior written consent and (ii) requires a license.*

This document is issued by TOBAM which is authorized and regulated by the Autorité des Marchés Financiers ("AMF").